

Japan Platform

International NGO delivering emergency humanitarian assistance from Japan

Your Continued Support to Japan Platform is Greatly Appreciated

At Japan Platform (JPF), our activities are supported by your generous donations. The number of displaced people by conflicts and natural disasters has been increasing all over the world. Humanitarian crises are becoming more complex, large-scale, and prolonged. In recent years especially, natural disasters have become larger and more frequent. Your kind support enables us to deliver emergency humanitarian aid for those who need it immediately, and to prepare for future disasters and humanitarian crises.

Regular Donations

For Individuals

● Monthly Supporter

This is a way to support us with as little as 1,000 yen per month. Your monthly donation allows us to deliver aid more quickly and continuously to those affected by disasters and humanitarian crises.

For Businesses and Organizations

● Supporting Member

We are looking for supporting members to lead our disaster recovery efforts. You can support us with as little as 50,000 yen per year, and your company name and logo will be displayed on our website.

General Donations

● General Donations

You can donate anytime. Your donation will be used for all JPF activities including needs assessment and emergency support in the event of a disaster or conflict.

● Donate in Other Ways

There are many ways to support us, such as donating using points or through various external websites.

● Donation through bequest or inheritance

You can donate a portion of your estate or inheritance from your family member for humanitarian relief efforts.

- JPF is accredited as a "Certified Non-Profit Organization" by the Tokyo Metropolitan Government. Donations to JPF are eligible for tax deductions and other tax benefits.
- There are also other ways to make a donation to a particular aid program. Please visit our website for more details.



Japan Platform

Kojimachi GN Yasuda Building 4F,
3-6-5 Kojimachi, Chiyoda-ku,
Tokyo 102-0083, Japan
TEL : +81-3-6261-4750
FAX : +81-3-6261-4753
<https://www.japanplatform.org/>



Official Accounts

Updates on our activities and events can be found at the following social media sites. We look forward to your visit!



@japanplatform



@japanplatform



@japanplatform_ngo



@japanplatform01



@japanplatform



A girl at school in Yemen (Response to Yemen Humanitarian Crisis) ©ACCEPT

Who we are?

Platform for civil society to realize collaboration among diverse partners to deliver Japan's aid

Japan Platform (JPF) was established in 2000 as an equal partnership of NGOs, businesses, and government to deliver emergency humanitarian assistance.

JPF works as a platform for civil society, during both emergency and non-emergency times, for rich collaboration among diverse people including these three parties as well as individuals who support our work. We swiftly and effectively deliver support from Japan to victims of natural disasters both domestically and internationally as well as refugees and internally displaced persons due to conflicts.

Our Vision

To expand Japanese assistance globally
and create a world where all individuals can open a path to the future.

Cooperation for effective assistance

Assembling the wisdom of NGOs, business communities, the government of Japan, and intellectuals, and forming a platform to practice effective operation to provide sustainable and optimal assistance to beneficiaries.

Support for the self-reliance of affected people

Building a society where people from different backgrounds can live together in the spirit of coexistence and self-reliance.

Leadership for NGO activities in humanitarian assistance

Playing a central role domestically and internationally to achieve and to promote what Japanese NGO aid ought to be.

Leave No One Behind People who need aid

(People affected by natural disasters, refugees, internally displaced persons due to conflicts)

Water Supply,
Sanitation and
Hygiene Promotion

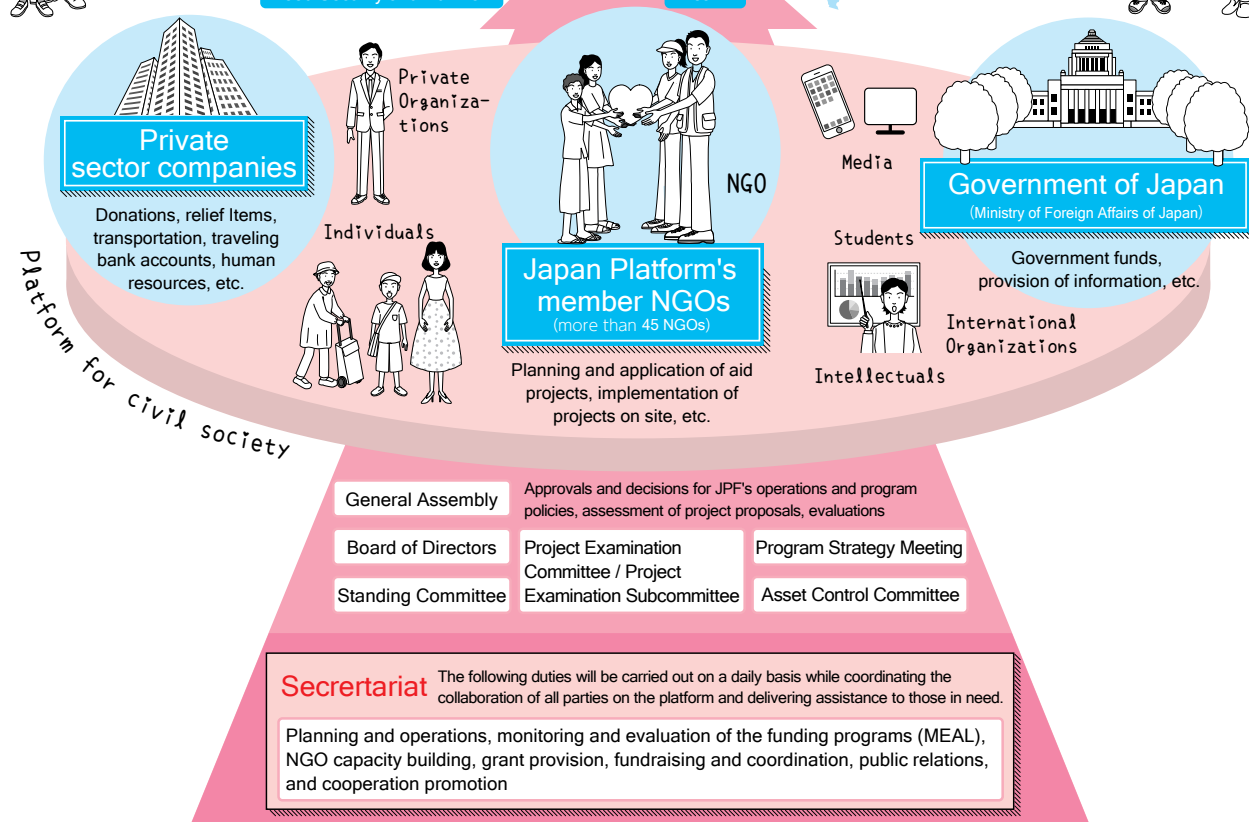
Food Security and Nutrition

Non-Food Items and Shelter

Health

Early Recovery

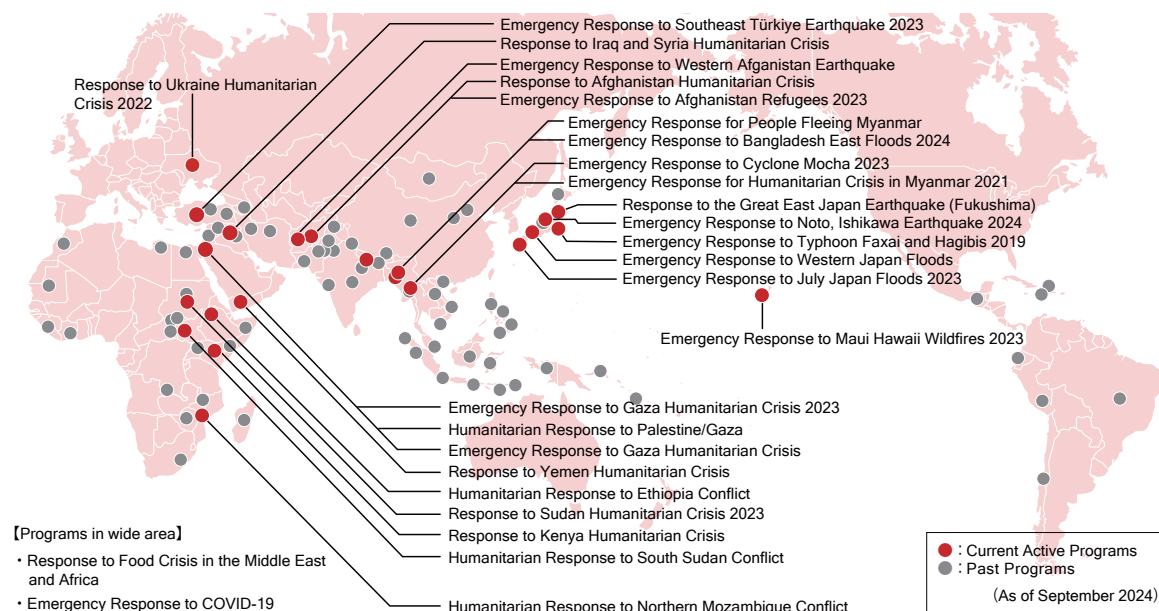
Education, Mental Health,
and Psycho-social Support



Our programs

Japanese emergency humanitarian aid in line with local conditions and people's needs reaching destinations throughout the world

Japan Platform has supported the aid activities of more than 45 member NGOs, each with its own set of diverse strengths. In line with local conditions and people's needs, we have delivered humanitarian assistance to more than 65 nations and regions through over 2,300 projects, with a total financial contribution of 92.4 billion yen. We have built a reputation based on trust by cooperation among our member NGOs and through accountability for our activities.



Emergency Response to Noto, Ishikawa Earthquake 2024 (January, 2024-)



Search and rescue activities with disaster rescue dogs ©PW

Response to Ukraine Humanitarian Crisis 2022 (Mar. 2022-)



Learning space for children operated by PLAN ©JPF

Emergency Response to Gaza Humanitarian Crisis 2023 (February, 2009-)



Gaza Strip on October 10, 2023/Courtesy of local officials ©CCP

Emergency Response for People Fleeing Myanmar (October, 2017-)



Children participating in hygiene training with health support volunteers ©JISP/HMBD

Response to Sudan Humanitarian Crisis 2023 (June, 2023-)



Food distribution at a shelter school in the province of Kassala ©PLAN

Response to Iraq and Syria Humanitarian Crisis (November, 2012-)



Students receiving distributed textbooks and stationery ©PARCIC

Find out more about our aid programs



NGO Unit (JPF member NGOs)

We collaborate and share information with our member NGOs, each of which has its own areas of expertise, to provide assistance that is rooted in the needs of affected people and refugees.

 AAR Japan 公益法人 被災者支援財団	AAR Association for Aid and Relief, Japan	 ACCEPT Accept International	 ADRA ADRA Japan
	BHN BHN Association	 CCP CCP Japan	 CIJ CARE International Japan
<small>たった一人のためにも、世界をつなげたい。</small> 	CWS CWS Japan	 FL Frontline	 FMY Radio FMY
	GNJP Good Neighbors Japan	 HFHJ Habitat for Humanity Japan	 HOPE HOPE International Development Agency
	HuMA Humanitarian Medical Assistance	 ICAN International Children's Action Network	 IVY IVY
	JADE Japan Agency for Development and Emergency	 JAFA Japan Asian Association and Asian Friendship Society	 JCF Japan Chelnobyl Foundation
	JCSA Japan Car Sharing Association	 JEN JEN	 JH International Medical Volunteers Japan Heart
	JISP Japan International Support Program	 JRA Japan Rescue Association	 JRCS Japanese Red Cross Society
	KCM Psychosomatic Care Magokoro	 KnK KnK Japan	 MdM Medecins du Monde Japon
	NICCO Nippon International Cooperation for Community Development	 OBJ Operation Blessing Japan	 PARCIC PARC Interpeoples' Cooperation
	PBV Peace Boat Disaster Relief	 PLAN Plan International Japan	 PW Peace Winds Japan
	RABENET Reconstruction Assistance Business Expert NETWORK	 REALs Reach Alternatives	 RJP RESULTS Japan
	SCJ Save the Children Japan	 2HJ Second Harvest Japan	 SEEDS SEEDS Asia
	SN SHAPLA NEER = Citizens' Committee in Japan for Overseas Support	 SPJ SDGs Promise Japan	 SVA Shanti Volunteer Association
	TARACHINE Mothers' Radiation Lab Fukushima	 tasukeai tasukeai haiki 0	 VAN Voluntary Architects' Network
	Vnet Vnet	 WVJ World Vision Japan	

Organization

Name	Japan Platform [Specified Nonprofit Corporation]					
Founded	August 10, 2000					
Operation Summary	We provide prompt and effective humanitarian aid at various international and domestic sites for affected people of natural disasters and those who have become refugees as a result of conflicts. To this end, NGOs, the government of Japan, business communities, and intellectuals come together in partnership, and aid activities are implemented under coordination and cooperation that make the most of each party's characteristics and resources.					
Accomplishments	Since our foundation in 2000, JPF has delivered humanitarian aid to more than 65 countries / regions, over 2,300 programs totaling 92.4 billion yen. Afghanistan, Bangladesh, Brazil, Burkina Faso, Cambodia, Chad, Chile, China, Cyprus, Djibouti, East Timor, Ecuador, Egypt, Eritrea, Eswatini, Ethiopia, Guatemala, Haiti, Hawaii, India, Indonesia, Iran, Iraq, Israel, Japan, Jordan, Kenya, Laos, Lebanon, Lesotho, Liberia, Madagascar, Malawi, Mauritania, Moldova, Mongolia, Morocco, Mozambique, Myanmar, Nepal, Niger, Pakistan, Palestinian Territories, Peru, Philippines, Poland, Romania, Sierra Leone, Slovakia, Solomon Islands, Somalia, South Africa, South Sudan, Sri Lanka, Sudan, Syria, Tajikistan, Thailand, Turkey, Uganda, Ukraine, Uzbekistan, Vanuatu, Vietnam, Yemen, Zambia, and Zimbabwe.					
Executive Directors	Co-Chairpersons	Yoshitaka Akimoto	General Affairs Official, Imperial Household Agency (Former) Grand Master of the Ceremonies, Imperial Household Agency (Former) Ambassador of Japan to Australia			
		Yasuhiro Ueshima	Executive Directors General, Peace Boat Disaster Relief			
	Vice Chairpersons	Kazuyuki Kinbara Megumi Kuwana	President & CEO, KK Associates Proffessor, Kinki University Faculty of International Studies			
		Executive Directors	Motomichi Ikawa Misao Eddy Kenro Oshidari	Director, Kuni Umi Asset Management Co. Ltd. Senior Advisor, Japan Women's University Managing Director, Association for Aid and Relief, Japan (Former) Reagional Director for Asia, World Food Programme		
	Hideko Katsumata Osamu Kunii Yoshiko Kojo		Co-Founder & Fellow, Japan Center for International Exchange CEO & Executive Director, Global Health Innovative Technology Fund Proffessor, AOYAMA GAKUIN UNIVERSITY Department of International Politics, School of International Politics, Economics and Communication			
	Sho Sato Akinori Suzuki Keiko Hamada Akiko Horiba		Chief Operation Officer, Japan Heart Secretary General of Yahoo Japan Foundation Journalist Senior Program Officer, Peacebuilding Program, The Sasakawa Peace Foundation			
	Auditors		Hidetaka Tanaka Hajime Yoshitake	Executive Director, Credit Rating Association of Japan U.S.CPA Executive Director, The Institute of Internal Auditors Japan Instructor(Concurrent post), Meiji University Graduate School of Professional Accountancy		
			Senior Advisers	Noboru Ishizaki Mayo Shono Sadahiko Sugaya Kanji Tanimoto Nobutaka Murao	(Former) Executive Director Mitsubishi Foundation Singer Chairman of the Board Watanabe Educational Institution Professor, Dr., School of Commerce, Waseda University Professor, Kwansei Gakuin University	
	Standing Committee			Chairperson	Yasuhiro Ueshima	Executive Directors General, Peace Boat Disaster Relief
				Members	Yoshitaka Akimoto	General Affairs Official, Imperial Household Agency (Former) Grand Master of the Ceremonies, Imperial Household Agency (Former) Ambassador of Japan to Australia
Motomichi Ikawa Kenzo Iwakami					Director, Kuni Umi Asset Management Co. Ltd. Director, Non-Governmental Organizations Cooperation Division International Cooperation Bureau, Ministry of Foreign Affairs	
Misao Eddy Kazuaki Kameda Kazuyuki Kinbara Megumi Kuwana Akiko Horiba		Senior Advisor, Japan Women's University Secretary General, Japan Platform President & CEO, KK Associates Proffessor, Kinki University Faculty of International Studies Senior Program Officer, Peacebuilding Program, The Sasakawa Peace Foundation				
Sayako Nogiwa		Manager, Overseas Operations and Advocacy, Association for Aid and Relief, Japan				
Adviser		Kazuto Sasaki	Project General Manager, International Division, The Japan Chamber of Commerce and Industry / The Tokyo Chamber of Commerce and Industry			

(As of September 2024)